

Fluid Coupling Repair

Unit: Fluid Coupling

Industry: Power



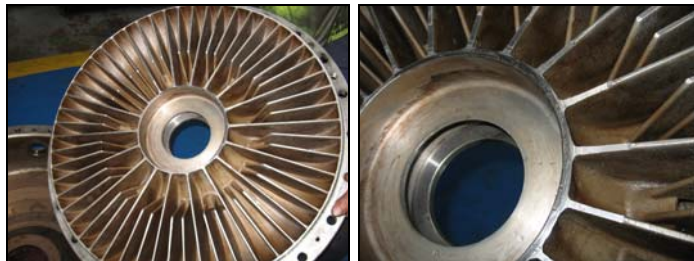
Unit as received

The unit prior to disassembly was imaged and booked on to our database which allocates a unique internal repair and tracker number. The unit was then dismantled, pressure cleaned and shot blasted and inspected and the following was found

- The main shaft remained in a serviceable condition requiring a general clean and polish.
- The scoop control assembly remained in a serviceable condition requiring a general clean and polish. It has been actuated by hand and controls easily.
- The impeller and runner showed signs of a mechanical rub having taken place at some time; apart from this they both looked fit for further service.
- The reservoir casing appeared to be in good condition, machining tolerances and concentricity were brought back to standard.
- 3 x valves and valve seats appeared in good condition and were cleaned, reset and a general overhaul was carried out to each valve.
- 2 x Bearings which were specific for the assembly were replaced, together with all seals, O-Rings and gaskets. The bearing ring had worn due to impact at some time previous.
- All damaged or worn fasteners were replaced including the critical fastenings which hold the valve seats to the casing as they needed to be leak proof.
- A critical baffle plate had fractured due to impact damage, this was welded



Scoop control assy



Impeller/runner assy + Rub Marks



Reservoir Casing



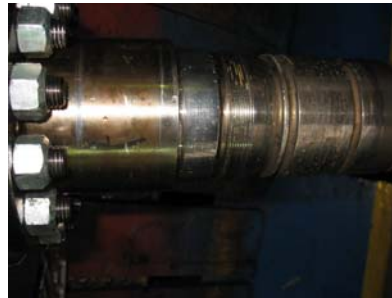
Casing valve seat area



Bearing Hsg Rub



3 x Valves



Shaft condition



Baffle plate fractured

The following work was then carried out on the unit

- 1 x Corrective Machining to spigots
- 1 x Baffle Plate weld
- 3 x Valves, as specified over
- 3 x Valve Seats, as specified over

The following spares were then fitted

- 1 x Set Bearings
- 1 x Seal Kit
- 1 x Set Fasteners as required

The unit was assembled in accordance with manufacturers specification then tested in our dedicated test facility prior to being packed ready for despatch



Unit completed

C P House, 3 The Furrows,
Merlin Park, Off Barton Dock Road,
Trafford Park, Manchester M32 0SZ

Telephone: 0161 864 4678
Facsimile: 0161 865 0295



Email: sales@pumpgroup.co.uk

www.pumpgroup.co.uk
www.surpluspumps.co.uk