

Dear Sir,

Tracker No: T 46620

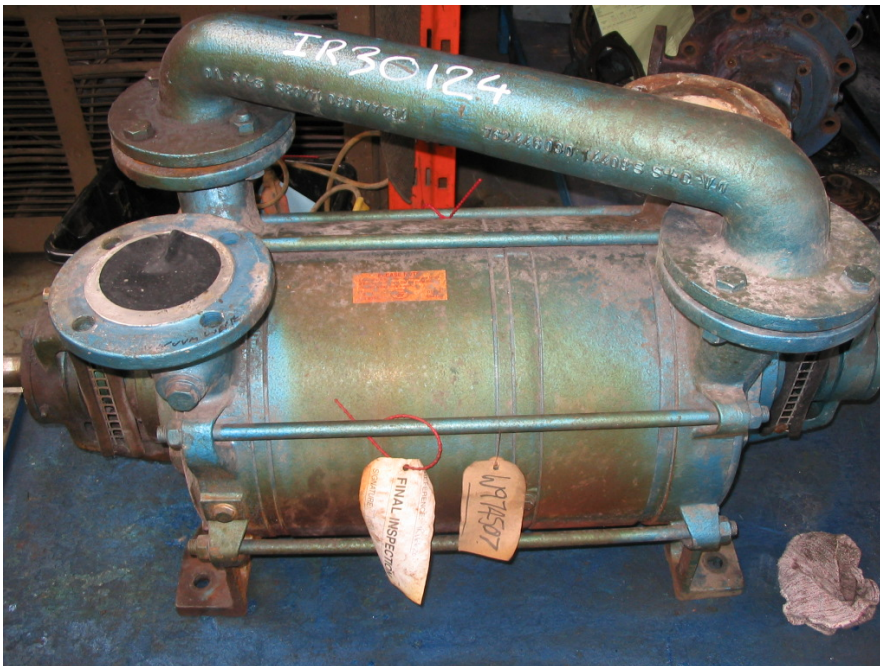
Your Ref: [REDACTED]

Pump Ref: LPHA 65320 Vacuum Pump

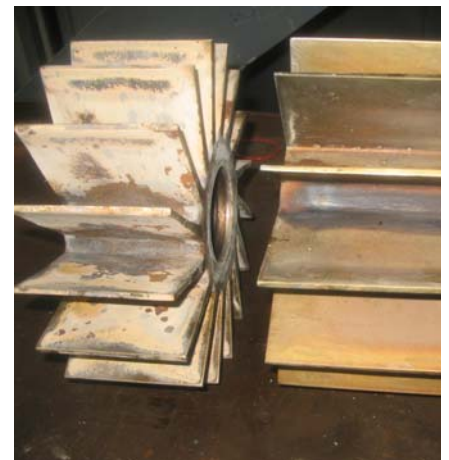
We confirm that the above unit has been stripped, cleaned, examined and the following found.

Condition Report:

Unit received in built condition with no apparent external damage. Internally, the unit was heavily clogged up with product residue. The sleeves where the mechanical sleeves sit are scored and worn, which would allow the seals to leak. The impellers have contacted the plates, scoring all items. The suction impeller was stuck fast on the shaft and proved extremely difficult to remove. The shaft is damaged in several locations but can be salvaged with remedial work.



Unit as received



Pump Supply & Repair
Group Ltd
Incorporating :
Pump Supply & Repair Co.
and
Pump Repairs Manchester
Ltd
Registered Number:
4664897



Impeller condition



Sleeve condition



Seal condition

Repair Proposal:

- Blast clean all parts
- Skim casings, impellers and sleeves and polish to achieve required clearances
- Replace Mechanical Seals
- Replace Bearings and Taper Lock Sleeve
- Replace Impeller Spacer Sleeve
- Repair Seal Sleeves using Belzona 1111 Supermetal
- Replace Locknuts and Washers
- Supply tube Epple Jointing Compound
- Replace O-Rings
- Rebuild and performance test. A test certificate will be provided.
- Spray paint with PSRG Hammerite Blue

Price for above.....£	inc. Carriage & Packing
-----------------------	-------------------------

Delivery: **3-4 Weeks** from receipt of authorisation to proceed.

Goods supplied as our standard terms and conditions. Terms 30 days. All prices quoted are **exclusive** of VAT

We trust our quotation meets your approval. In the meantime no further action will be taken on this unit until your full instructions are received.

We regret that any pump you choose not to repair or has been deemed beyond economical repair will be subject to inspection/collection charges of £ . This charge will be waived if a new unit is purchased from ourselves.

There will also be an additional cost of carriage incurred; should you request the return of the unit.

We offer a full installation and commissioning service on this type of pump. Whether it's a simple like for like swap or a brand new installation involving, mechanical, electrical and civil work. PSRG can offer - [The complete service for industrial pumps!](#)

Please visit our website at www.pumpgroup.co.uk for up to date information on our company and www.surpluspumps.co.uk for information on our current range of surplus pumps.

Yours faithfully,

Andrew Hogg
Quotation Department

Pump Supply & Repair
Group Ltd
Incorporating :
Pump Supply & Repair Co.
and
Pump Repairs Manchester
Ltd
Registered Number:
4664897