

Dear Sir,

Tracker No: T57476

Your Ref:

Pump Ref: Stothert and Pitt Size 235

We confirm the above pump was collected by our transport and quote you accordingly to repair it. The pump has been stripped, power cleaned, examined and the following found.

Condition Report



Pump as received

Inspection Report

Based on standard operational conditions and normal wear pattern we would quote to undertake the following scope of repair work.

Rotor Assembly

The twin rotors were found to be wedged inside the casing, one had sheared against the other causing it to distort. As a consequence of the shear this took out both mechanical seal assemblies and various other components as detailed below.

The rotors were split apart by a mixture of flame cutting and grinding.



Sheared Shaft



Shaft Damage

Body

When finally dismantled the body was examined and found to remain in reasonable condition with no obvious signs of cracking. Wear was found to the bores in the order of 0.010" oversize.

Endcover

The drive end is distorted and cracked in between the mechanical seals. The bearing abutment ring has sheared.

The gear end has survived major damage.



Mechanical Seals

All are damaged beyond repair.



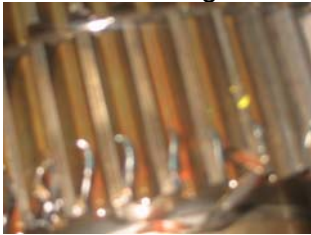
Gearbox Assembly
Has survived major damage

Oil Pump Assembly
Damaged beyond repair.



Timing Gear Assembly

Both are damaged/worn on the teeth



Bearing Caps
Both are damaged /worn



Repair Proposal

Dismantle for inspection report together with images the condition found.
Given the amount of damage, the only parts worth salvaging are the body, gearbox and gear endcover. All other parts would have to be manufactured new

NOTE We would recommend that the body is re-bored to take oversize rotors of new manufacture. This would return the unit to first class condition.

Price to Repair the above unit fitting all parts as detailed inclusive of return delivery to site, offloading by yourselves excluding VAT, is as follows

Total	£	EX VAT
--------------	----------	---------------

There is an option you may wish to consider - utilise the spare rotors you have free issued to us and match to the current body. There would be no guarantee of the final efficiency due to oversize wear found to the body but it is probably no worse than when the pump was last in an operating condition.

Price to Repair the above unit fitting all parts as detailed but utilising the existing rotors inclusive of return delivery to site, offloading by yourselves, excluding VAT, is as follows

Total	£	EX VAT
--------------	----------	---------------

Anticipated availability will be 14 to 16 working weeks in both cases from your permission to proceed.

The cost of supplying an interchangeable replacement bareshaft pump is as follows. Relief Valve not included.

Total	£	Ex VAT
--------------	----------	---------------

Anticipated availability will be 22 to 24 working weeks from your permission to proceed.

If the pump is of new supply or if the pump body is re-bored and new rotors manufactured the output would be the same as the original pump. NOTE this may not be exactly the same as what is claimed by **Stothert and Pitt records**

As previously stated if the free issued rotors are utilised, it is estimated that the output would be similar to first supply but it cannot be guaranteed.

In all cases hydrostatic pressure test of the body assembly to 1.5 times working pressure will be carried out and the unit test run up to 200kW oil test at the duty speed and as high as pressure as possible within the 200kW capacity available in the test cell.

The following documentation will be provided

- Hydrostatic Pressure Test Certificate
- Pump Test Certificate
- O & M Manual
- Material Certification for all Pump End Components

The warranty offered from date of supply is 18 months or approximately 12 months from first use. Please advise if you intend to store the pump for a lengthy period in order for storage instructions to be provided.

This quotation does not allow for any site re-commissioning.

Goods supplied as our standard terms and conditions. Terms 30 days.

We regret that any pump you choose not to repair or has been deemed beyond economical repair will be subject to inspection/collection charges of £ . This charge will be waived if a new unit is purchased from ourselves. There will also be an additional cost of carriage incurred; should you request the return of the unit.

We trust our quotation meets your approval. In the meantime no further action will be taken on this unit until your full instructions are received.

We offer a full installation and commissioning service on this type of pump. Whether it's a simple like for like swap or a brand new installation involving, mechanical, electrical and civil work. PSRG can offer - [The complete service for industrial pumps!](#)

Please visit our website at www.pumpgroup.co.uk for up to date information on our company and www.surpluspumps.co.uk for information on our current range of surplus pumps.

Yours faithfully,

Jeff Milner
Quotation Department