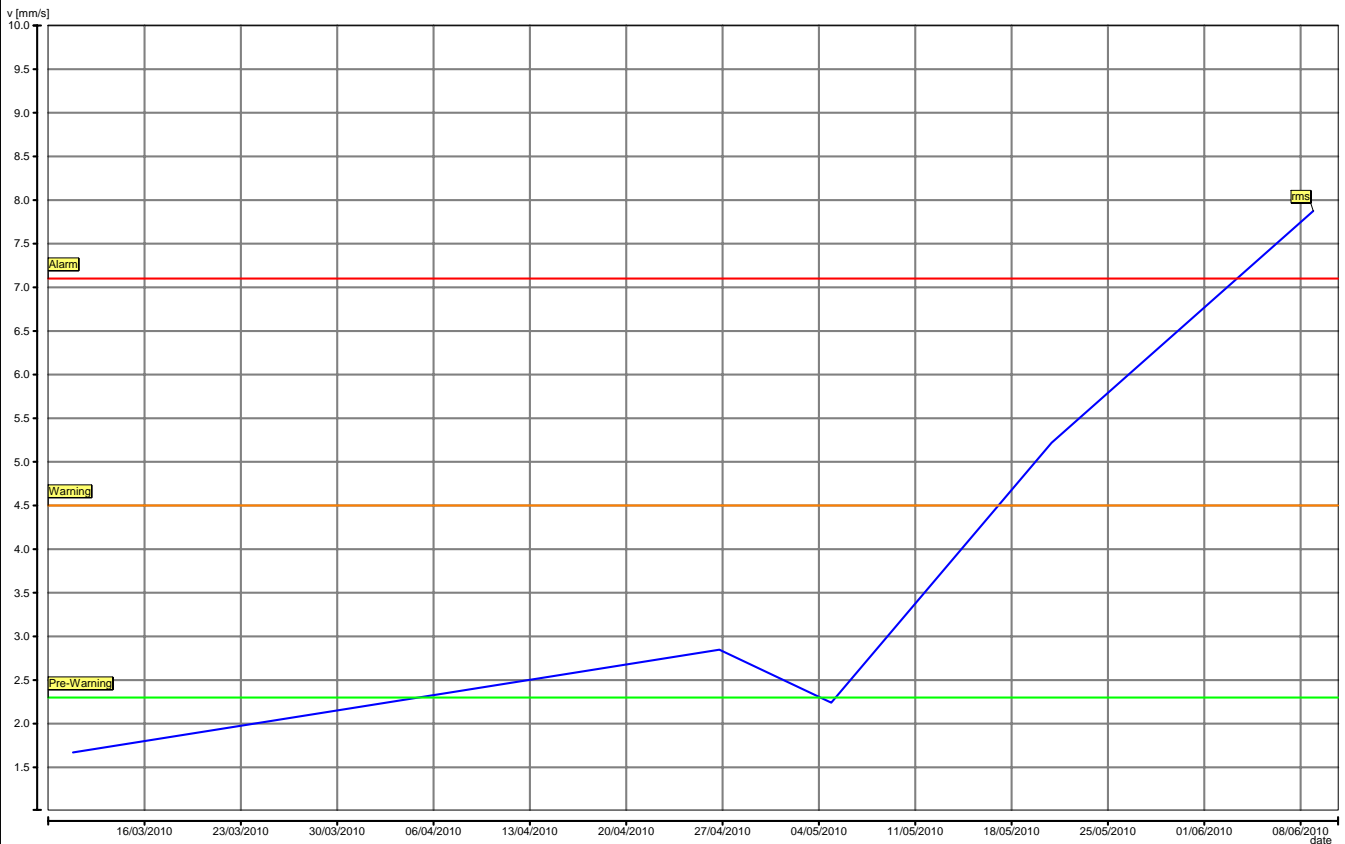


New Database\Sample Company\Chem Plant\18P053 Product Pump\Pump Drive End\102 Overall velocity >120



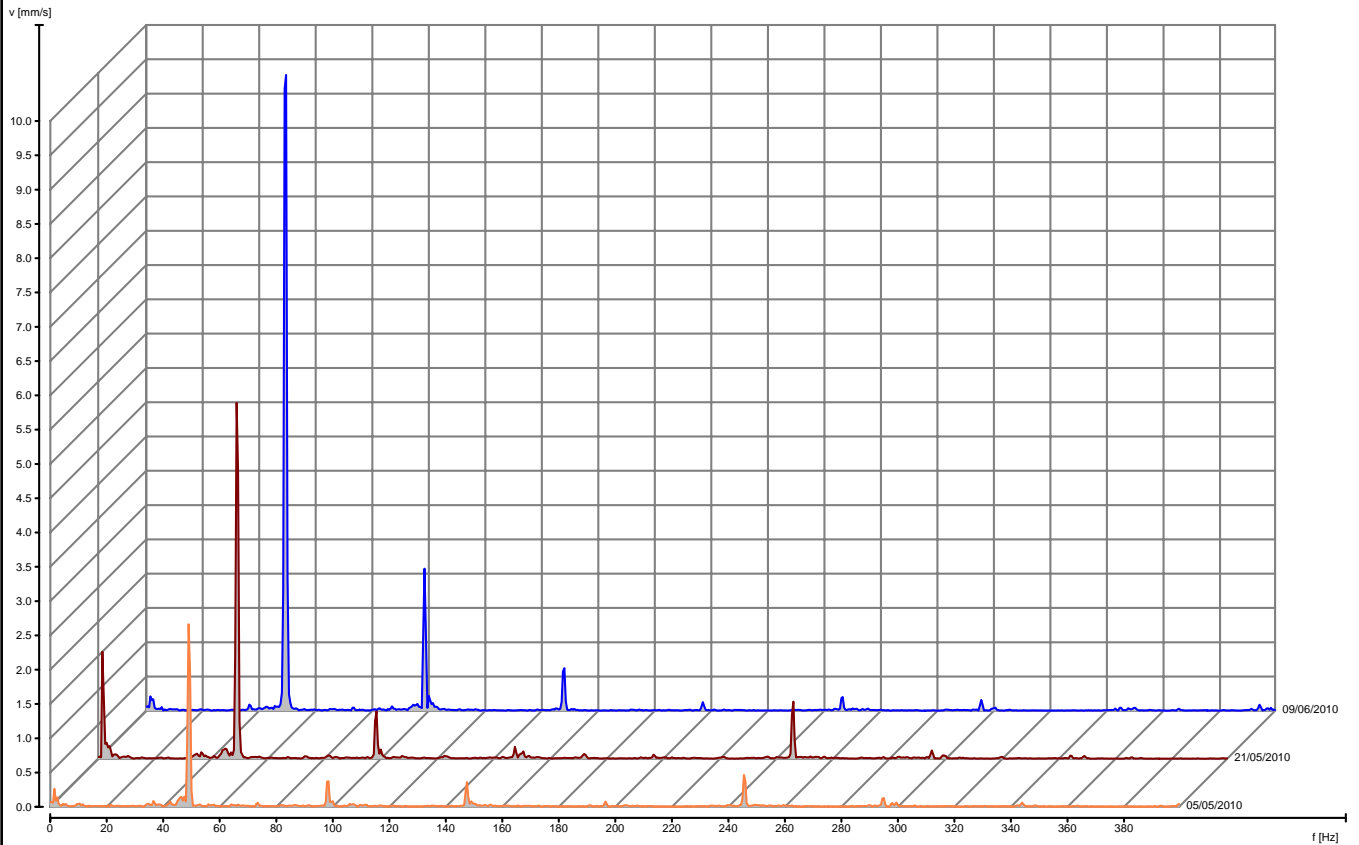
Main Cursor	= Not Active	Machine	18P053 Product Pump
	= Not Active	Type :	Pump
Delta Cursor	= Not Active	ISO Class	No Class (ISO10816-3)
	= Not Active	Power :	2 kW
		Speed	2900 RPM

Date/Time 28/06/2010 15:50:58

Page 1 of 1

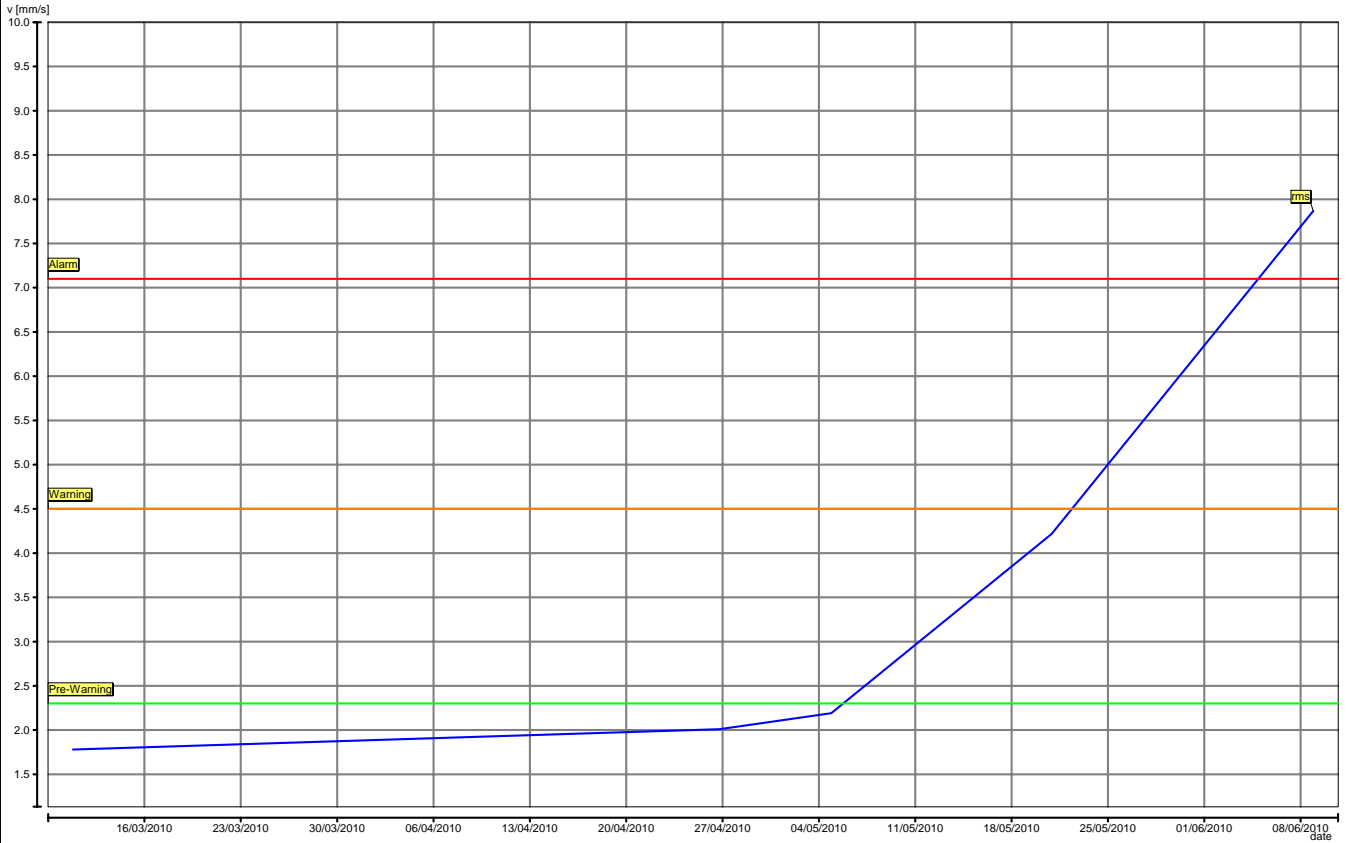
Measurement date and time: 09/06/2010 13:57:56 ,21/05/2010 13:36:54 ,05/05/2010 13:24:38

New Database\Sample Company\Chem Plant\18P053 Product Pump\Pump Drive End\104 Mach. spectr >120



Main Cursor X [Hz] = Not Active
 Y [mm/s] = Not Active

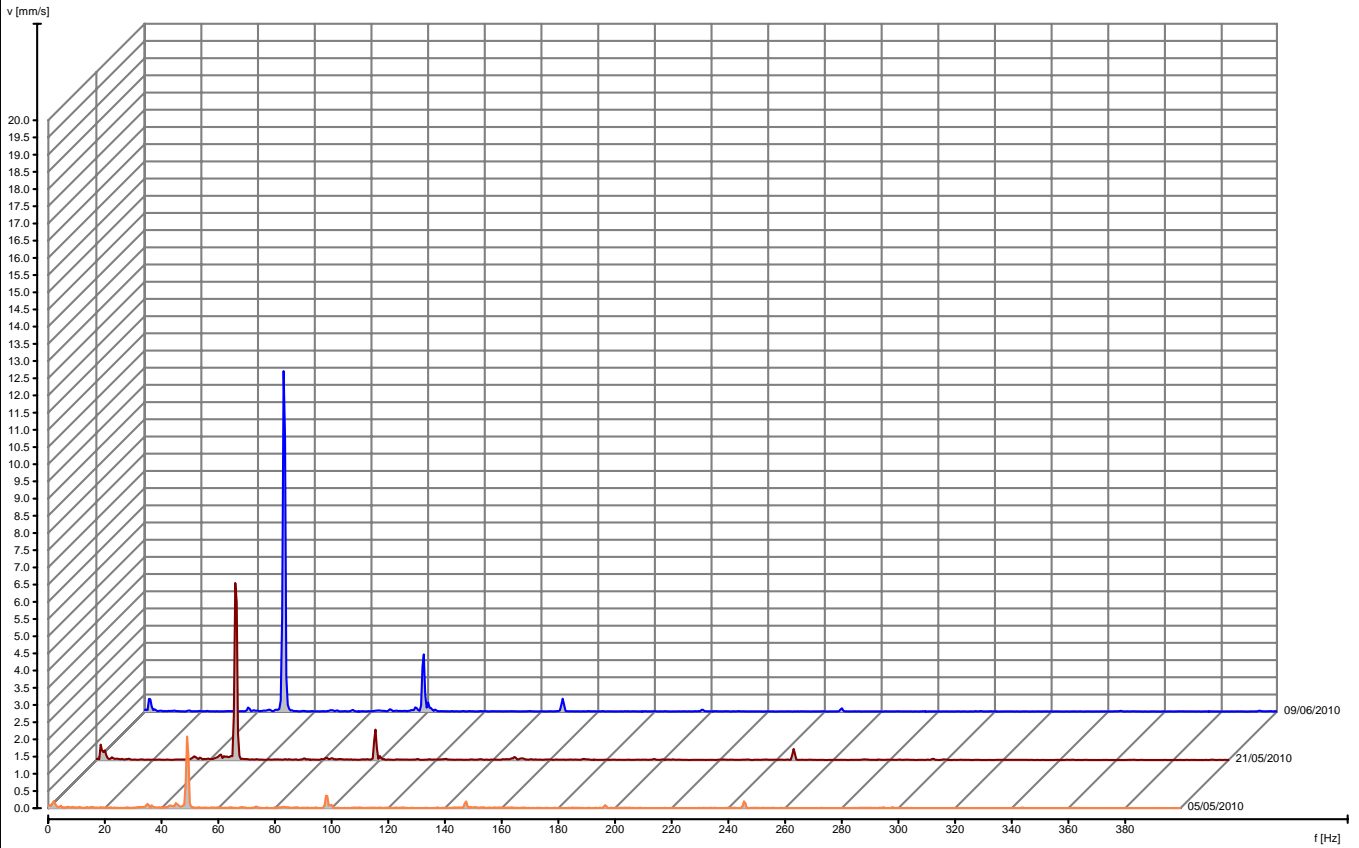
New Database\Sample Company\Chem Plant\18P053 Product Pump\Pump Non Drive End\102 Overall velocity >120



Main Cursor	= Not Active	Machine	18P053 Product Pump
	= Not Active	Type :	Pump
Delta Cursor	= Not Active	ISO Class	No Class (ISO10816-3)
	= Not Active	Power :	2 kW
		Speed	2900 RPM

Measurement date and time: 09/06/2010 13:59:02 ,21/05/2010 13:37:58 ,05/05/2010 13:25:46

New Database\Sample Company\Chem Plant\18P053 Product Pump\Pump Non Drive End\104 Mach. spectr
>120



Main Cursor X [Hz] = Not Active
Y [mm/s] = Not Active