
**BELZONA®
REBUILDS SOLE PLATES ON
PAPER MACHINE**

CUSTOMER

Paper Mill in Oregon, U.S.A.

APPLICATION DATE

December 1998

APPLICATION SITUATION

Base plates were subject to continuous white water attack and no coating had lasted longer than 3 months.

PROBLEM

Corrosion of base plates would eventually cause the mill to bear the cost of structural steel replacements.

PRODUCTS

Belzona® 4111 (Magma-Quartz)

Belzona® 4141 (Magma Build)

SUBSTRATE

Cast iron plate and concrete pedestal

APPLICATION METHOD

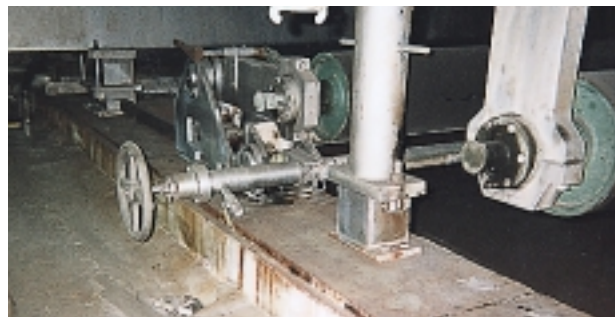
The application was carried out in accordance with a modified version of Belzona Know-How Leaflets FPA-1 and FPA-3.

BELZONA FACTS

Belzona® 4111 and Belzona® 4141 were used to resurface and ultimately protect the sole plates from chemical attack at 110½ - 120½F.

PHOTOS

1. Cast iron sole plate alongside the paper machine.
2. Surface prepared by pressure washing and grinding.
3. Belzona® 4111 (Magma-Quartz) being used to rebuild corroded sole plate.
4. Finished application of sole plates.



1.



2.



3.



4.