



**BELZONA®**  
**1311**  
C E R A M I C R - M E T A L

**For Rebuilding Metal Surfaces  
Damaged by Erosion/Corrosion**

Corrosion occurs when metal surfaces react with oxygen in the presence of water to form protective oxide films. These protective films are then removed by physical erosion such as the abrasive action of turbulent fluids.

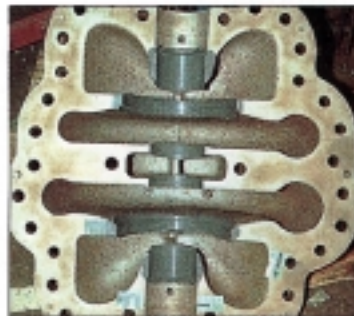
This cycle of corrosion and erosion continually repeats itself, giving rise to the phenomenon of erosion/corrosion, which can be accelerated by:

- Impingement
- Entrainment
- Cavitation
- Bi-metallic corrosion

Erosion/corrosion produces rapid eating away of metal surfaces causing deterioration in performance/efficiency of machinery and equipment.

Belzona® 1311 was designed specifically for rebuilding all erosion/corrosion damage. For over 20 years it has proven to be the ideal material for this type of application with worldwide acceptance by such bodies as:

- Det Norske Veritas
- Bureau Veritas
- U.S. Department of Navy
- British Coal
- American Bureau of Shipping
- Caterpillar Inc.
- York International
- Italian Register of Shipping



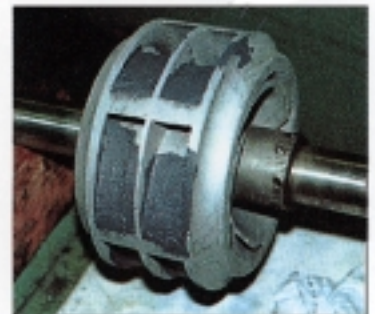
CENTRIFUGAL PUMPS



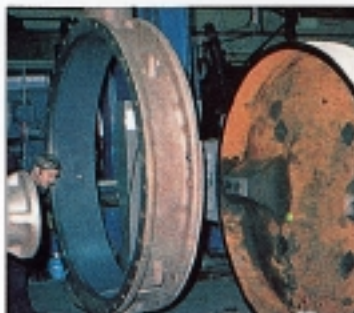
KORT NOZZLES



TAIL SHAFTS



IMPELLERS



VALVES



VACUUM PUMPS

**The Unconventional Alternative.**

**Belzona Polymeric Ltd.** Harrogate, HG1 4AY, England  
Fax: +44 (0) 1423 505967 • Tel: +44 (0) 1423 567641  
E-mail: Com@Belzona.co.uk

**Belzona Inc.** Miami, Florida 33172, USA  
Fax: (305) 599-1140 • Tel: (305) 594-4994  
E-mail: Belzona@Belzona.com

